

RESIDENTIAL STRUCTURE INVESTIGATIONS

Poor or little design input from a design professional can lead to structural problems long after the builder has left the site. Sagging floors, cracked ceiling and wall board, cracked and leaking shower stalls, out-of-plumb doors, cracked foundation walls and a whole host of other problems can be the result of inadequately designed or poorly placed structural members.

The first two investigations were of projects where no input from a design professional was evident. The remaining investigations are of unreinforced concrete block foundation walls that had begun to fail. This can be a relatively common problem in older homes where lateral earth pressures eventually become too great for the unreinforced concrete block to hold back.

Pack Residence



Fig. 1. Pack residence.



Fig. 2. Pack residence.



Klimo Residence



Fig. 1. Klimo residence.



Fig. 2. Klimo residence.



Fig. 3. Klimo residence.



3700 Oklahoma Residence



Fig. 1. 3700 Oklahoma.



Fig. 2. 3700 Oklahoma.



Fig. 3. 3700 Oklahoma.



Fig. 4. 3700 Oklahoma.



Fig. 5. 3700 Oklahoma.



Fig. 6. 3700 Oklahoma.



Fig. 7. 3700 Oklahoma.



Fig. 8. 3700 Oklahoma.



Fig. 9. 3700 Oklahoma.



Fig. 10. 3700 Oklahoma.



Fig. 11. 3700 Oklahoma.



Fig. 12. 3700 Oklahoma.



Hoffman Residence



Fig. 1. 7141-43 Duplex.



Fig. 2. 7141-43 Duplex.



Fig. 3. 7141-43 Duplex.



Fig. 4. 7141-43 Duplex.



Fig. 5. 7141-43 Duplex.



Fig. 6. 7141-43 Duplex.

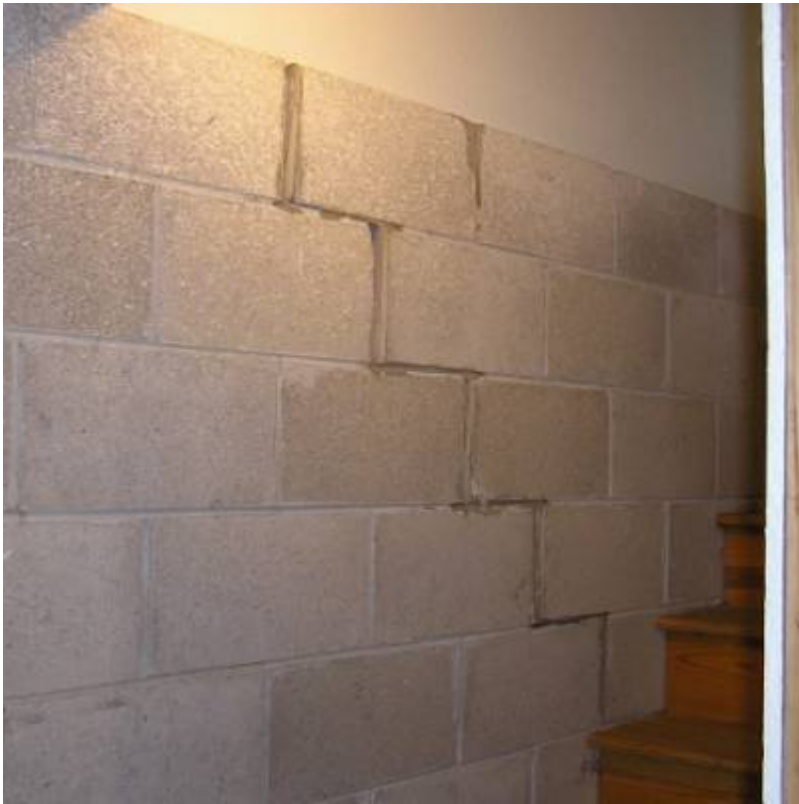


Fig. 7. 7141-43 Duplex.



Fig. 8. 7141-43 Duplex.



Fig. 9. 7141-43 Duplex.



Fig. 10. 7141-43 Duplex.



Fig. 11. 7141-43 Duplex.



Fig. 12. 7141-43 Duplex.



Fig. 13. 7141-43 Duplex.



Schmidt Residence



Fig. 1. Schmidt residence.



Fig. 2. Schmidt residence.



Fig. 3. Schmidt residence.



Fig. 4. Schmidt residence.



Fig. 5. Schmidt residence.



Fig. 6. Schmidt residence.



Schneider Residence



Fig. 1. Schneider residence.



Fig. 2. Schneider residence.



Fig. 3. Schneider residence.



Fig. 4. Schneider residence.



Fig. 5. Schneider residence.



<align center>RPS STRUCTURAL ENGINEERING, LLC © 2013</align>

From:

<http://rpschmitz.com/> - **RPS**

Permanent link:

<http://rpschmitz.com/doku.php?id=rpswiki:projects:investigations:residential>

Last update: **2018/05/08 18:23**

