

# HOSPITALS

Project photos are of St. Elizabeth Hospital, Appleton, WI. While employed at Flad & Associates of Wisconsin I had the opportunity to be project engineer for this \$27M concrete framed building addition to this hospital. We performed preliminary system analysis and final column and caisson foundation designs.

## Excavation and Earth Retention



Fig. 1. Site prepped for excavation after demolition of previous structures.



Fig. 2. Start of excavation.



Fig. 3. Excavation and installation of earth retention system.



Fig. 4. Excavation and installation of earth retention system.



Fig. 5. Installation of soldier beam earth retention system.



Fig. 6. Installation of soldier beam earth retention system.



Fig. 7. Underpinning existing foundations.



Fig. 8. Underpinning existing foundations.



Fig. 8. Underpinning existing foundations.



Fig. 9. Underpinning foundations for existing hospital pool.



## Caisson Installation



Fig. 11. Deep foundations utilized drilled piers.



Fig. 12. Drilled pier installation.



Fig. 13. Setting rebar cage in drilled pier.



Fig. 14. Drill bits and shafts used to install drilled piers.



Fig. 15. Drilled pier after concrete has been placed.





# Foundations

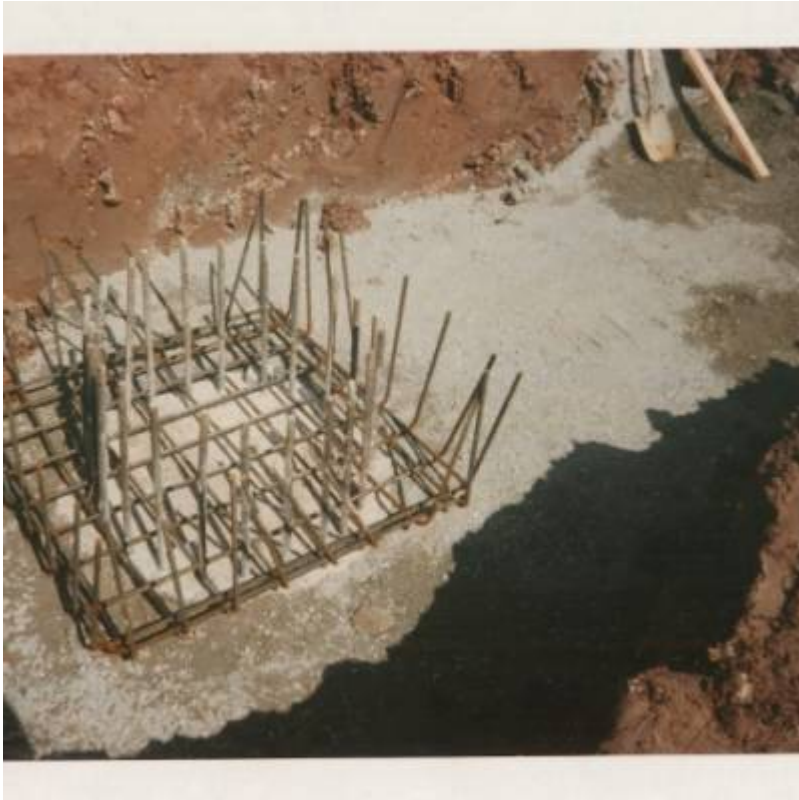


Fig. 16. Foundations - pier caps.



Fig. 17. Foundations - pier caps and grade beams.



Fig. 18. Foundations - pier caps and grade beams.



Fig. 19. Foundations - pier caps and grade beams.



Fig. 20. Foundations - pier caps and grade beams.



Fig. 21. Foundations - pier caps, grade beams and basement walls.



## Floor Framing



Fig. 22. Floor framing system - flat slab with drops.



Fig. 23. Concrete framing systems - beam and slab and flat slab with drops.



Fig. 24. Concrete framing systems - beam and slab and flat slab with drops.



## Completed Photos



Fig. 25. Emergency entrance and physical plant additions.



Fig. 26. Emergency entrance.



Fig. 27. New main entrance and reception area addition.

RPS STRUCTURAL ENGINEERING, LLC © 2023



From:

<http://rpschmitz.com/> - **RPS**

Permanent link:

<http://rpschmitz.com/doku.php?id=rpswiki:projects:hospitals>

Last update: **2023/11/11 14:22**

